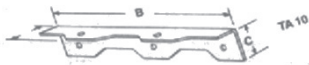


Treppenwinkel TA

feuerverzinkt, pass. hierzu DIN 571, 6 x 35



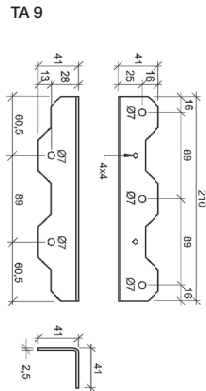
Art. 213

SIMPSON

Strong-Tie

A x B x C	Best.-Nr.	VE	A x B x C	Best.-Nr.	VE
38 x 210 x 38	511 000	50	38 x 260 x 38	511 000	50

TA 9



TA 10

